



Crown fiberglass columns come standard with a Tuscan capital and base molding and are made from materials that are water resistant, rot resistant and impervious to insect infestation. Optional design styles include the Attic base molding, the Roman Doric capital and base molding and Contemporary caps and bases for non-tapered fiberglass columns.

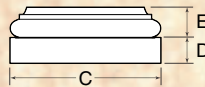
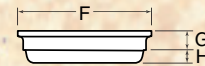
For the more traditional installations, Crown offers a full range of decorative capitals that can be viewed on page fourteen of this literature piece.

Cap & Base

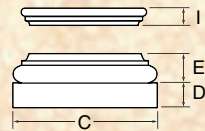
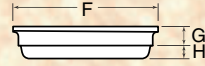
Size	SPECIFICATIONS FOR TUSCAN CAPITAL & BASE							
	BASE			CAPITAL				
	Plinth	Molding	Square	Round	ASTRAGAL			
C	D	E	F	G	H	I		
Fiberglass Cast								
6"	8 1/4"	1 1/2"	1 3/4"	7 1/8"	1 1/8"	5/8"	*	
8"	10 1/4"	1 7/8"	2 3/8"	9 9/16"	1 3/8"	1"	1"	
10"	12 7/8"	2 3/8"	2 7/8"	11 7/8"	1 3/4"	1 1/4"	1"	
12"	15 1/4"	2 3/4"	3 1/4"	14 1/2"	2"	1 3/8"	1"	
14"	18 3/4"	3 3/8"	4"	17 1/4"	2 3/8"	1 5/8"		
16"	21 1/2"	3 7/8"	4 1/2"	19 1/4"	2 3/4"	1 7/8"		
18"	24 1/4"	4 1/4"	5 3/8"	21 3/8"	3"	2"		
Filament Wound								
14"	18 3/4"	3 3/8"	4"	17 1/8"	2 3/8"	1 5/8"		
16"	21 1/2"	3 7/8"	4 1/2"	19 1/4"	2 3/4"	1 7/8"		
18"	24 1/4"	4 1/4"	5 3/8"	21 1/2"	3"	2 1/8"		
20"	27"	4 3/4"	6"	24 1/4"	3 3/8"	2 1/4"		
22"	29 3/4"	5 1/4"	6 7/8"	26 1/2"	3 3/4"	2 1/2"		
24"	32 1/2"	5 3/4"	7 1/2"	28 3/4"	4 1/8"	2 3/4"		
30"	40 1/2"	7 1/4"	9 1/4"	35 3/4"	5 1/8"	3 1/2"		

Size	SPECIFICATIONS FOR ROMAN DORIC CAPITAL & BASE						
	BASE			CAPITAL			
	Plinth	Molding	Square	Round			
C	D	E	F	G	H		
Fiberglass Cast							
6"	8 1/4"	1 1/2"	1 3/4"	7 1/8"	1 1/8"	5/8"	
8"	10 3/8"	1 1/8"	2 7/16"	9 3/4"	1 7/16"	1 1/16"	
10"	12 15/16"	2 5/16"	3 1/8"	12 5/16"	1 3/4"	1 9/16"	
12"	15 3/16"	2 3/4"	3 1/2"	14 3/4"	2 3/16"	1 1/2"	
14"	18 11/16"	3 3/8"	4 1/16"	17 1/2"	2 5/16"	2 1/16"	
16"	21 1/2"	3 7/8"	4 7/8"	19 7/8"	2 5/8"	2 1/16"	
18"	24 3/8"	4 1/4"	5 3/4"	22 1/4"	3 1/8"	2 1/4"	
Filament Wound							
14"	18 11/16"	3 3/8"	4 1/16"	17 1/2"	2 5/16"	2 1/16"	
16"	21 1/2"	3 7/8"	4 7/8"	19 7/8"	2 5/8"	2 1/16"	
18"	24 3/8"	4 1/4"	5 3/4"	22 1/4"	3 1/8"	2 1/4"	
20"	27"	4 3/4"	6 1/4"	25"	4"	2 3/4"	
22"	29 3/4"	5 1/4"	6 3/4"	27 3/8"	4 3/8"	3"	
24"	32 1/2"	5 3/4"	7 1/2"	29 3/4"	4 1/2"	3 1/4"	
30"	40 1/2"	7 1/4"	9 3/8"	37"	5 7/8"	4 1/2"	

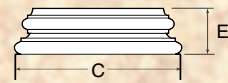
TUSCAN ROUND



TUSCAN SQUARE

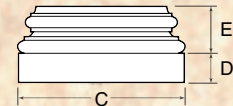


CONTEMPORARY

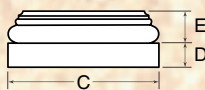


Size	SPECIFICATIONS FOR CONTEMPORARY CAPITAL & BASE	
	BASE	
	C	Molding E
Fiberglass Cast		
8"	10 3/4"	3 1/4"
10"	13 3/8"	3 7/8"
12"	16 1/8"	4 1/2"
14"	18 3/4"	5 3/8"

ATTIC BASE



ROMAN DORIC



Size	SPECIFICATIONS FOR ATTIC BASE		
	BASE		
	Plinth	Molding	
C	D	E	
Fiberglass Cast			
6"	8 1/2"	1 1/2"	2 7/16"
8"	10 3/4"	1 7/8"	3 1/4"
10"	13 3/8"	2 3/8"	3 7/8"
12"	16 1/8"	2 3/4"	4 1/2"
14"	18 3/4"	3 3/8"	5 3/8"
16"	21 1/2"	3 7/8"	6 1/4"
18"	24 1/4"	4 1/4"	7 1/8"
Filament Wound			
14"	18 3/4"	3 3/8"	5 3/8"
16"	21 1/2"	3 7/8"	6 1/4"
18"	24 1/4"	4 1/4"	7 1/8"
20"	27"	4 3/4"	8 1/8"
22"	29 3/4"	5 1/4"	9"
24"	32 1/2"	5 3/4"	9 15/16"
30"	40 1/2"	7 1/4"	12"